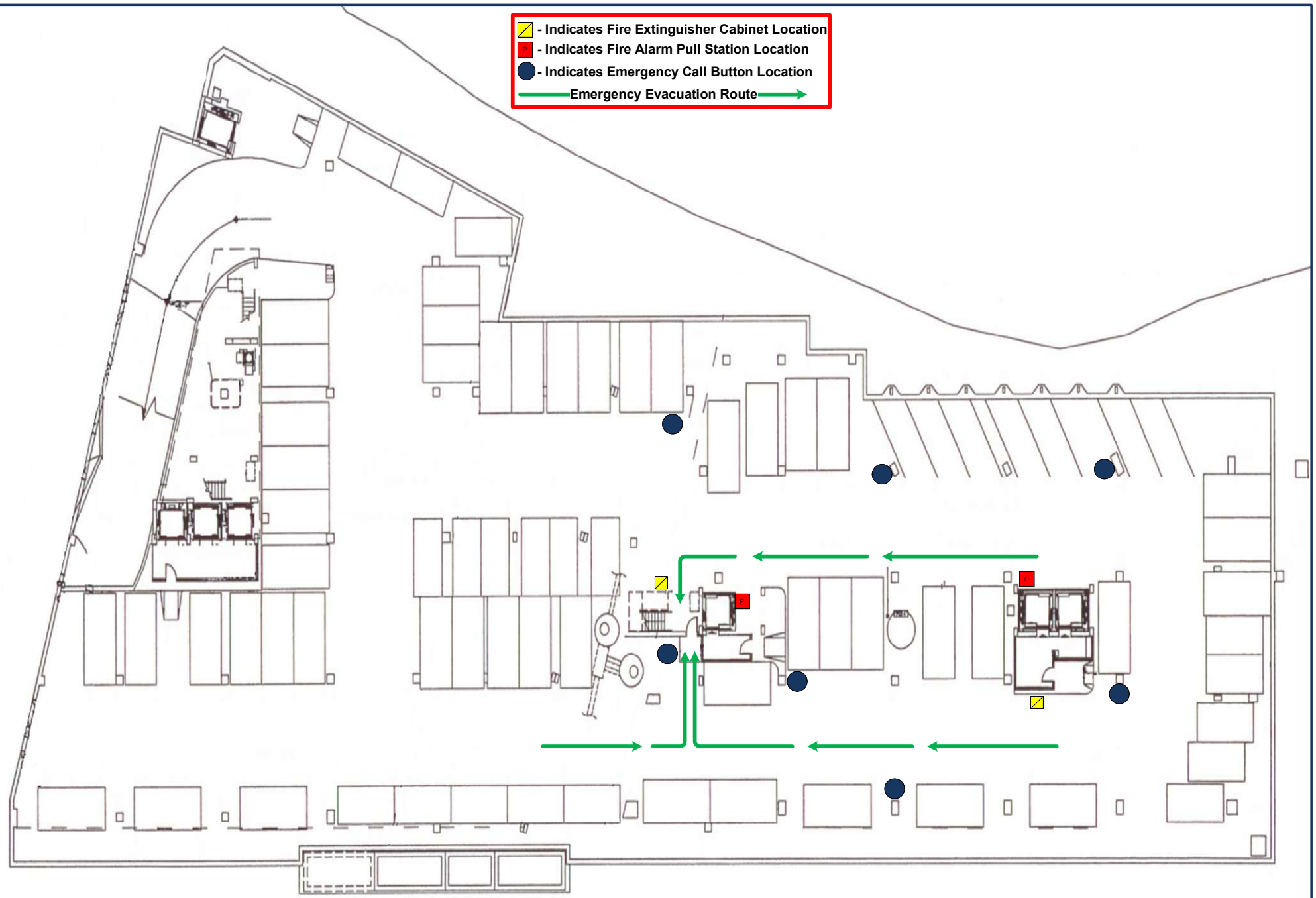
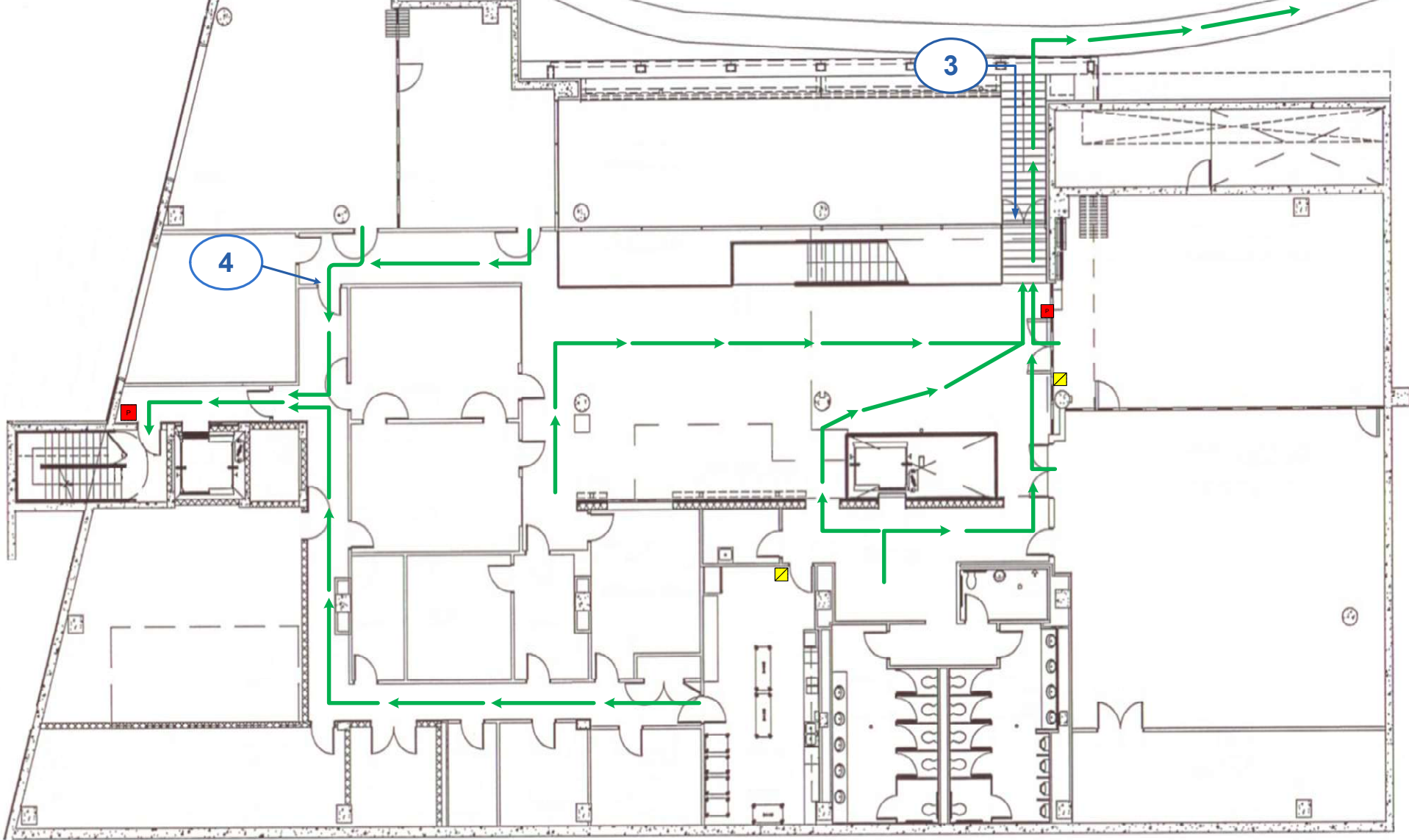


- ▣ - Indicates Fire Extinguisher Cabinet Location
- - Indicates Fire Alarm Pull Station Location
- - Indicates Emergency Call Button Location
- Emergency Evacuation Route



2900 K Street, NW
Garage Level
Emergency Evacuation Plan

- ▣ - Indicates Fire Extinguisher Cabinet Location
- - Indicates Fire Alarm Pull Station Location
- Emergency Evacuation Route



2900 K Street, NW
1st Floor

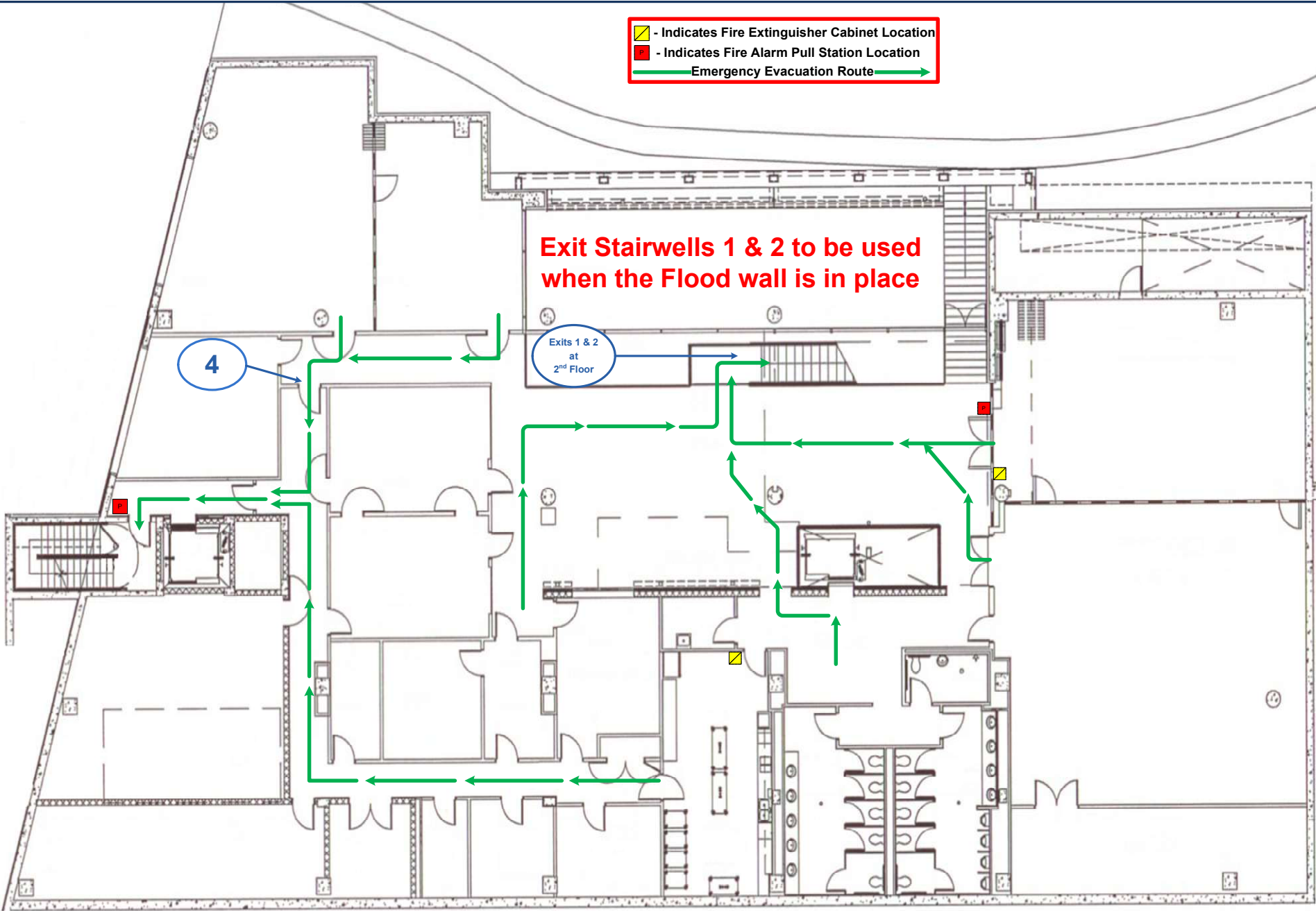
Special Event Emergency Evacuation Plan

- ☐ - Indicates Fire Extinguisher Cabinet Location
- - Indicates Fire Alarm Pull Station Location
- Emergency Evacuation Route

Exit Stairwells 1 & 2 to be used when the Flood wall is in place

Exits 1 & 2 at 2nd Floor

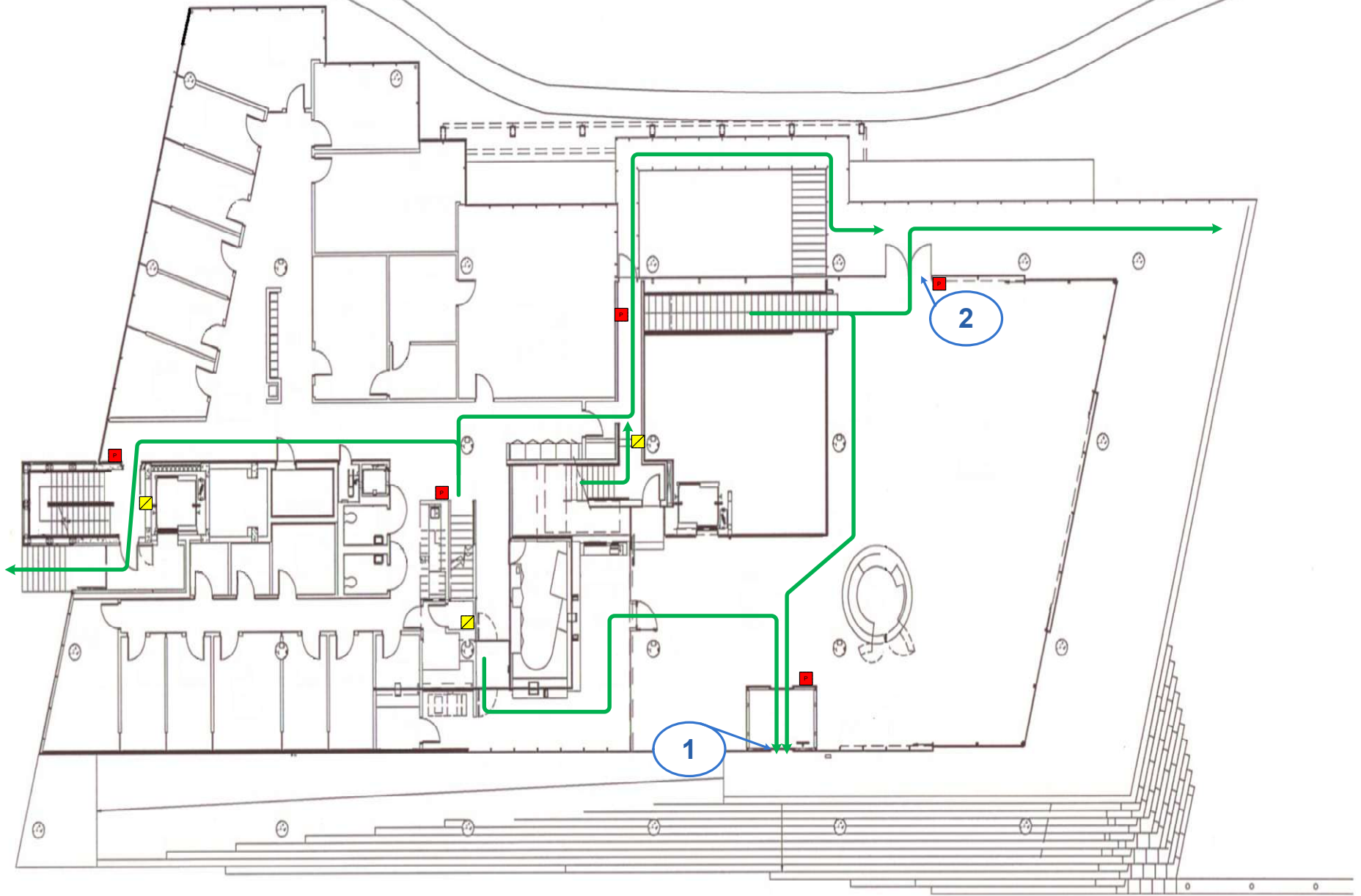
4



2900 K Street, NW
1st Floor

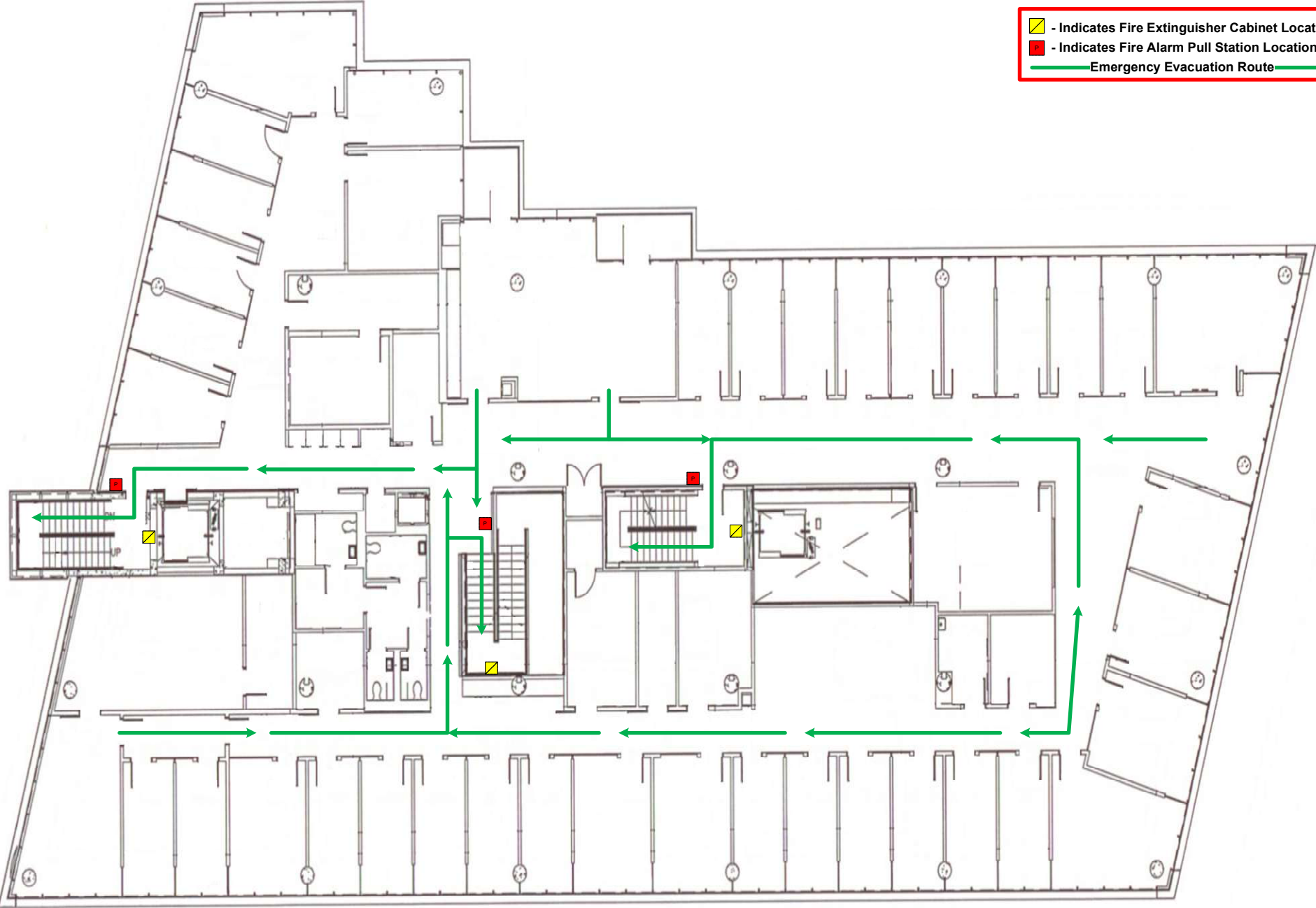
Special Event Emergency Evacuation Plan

- ▣ - Indicates Fire Extinguisher Cabinet Location
- - Indicates Fire Alarm Pull Station Location
- Emergency Evacuation Route



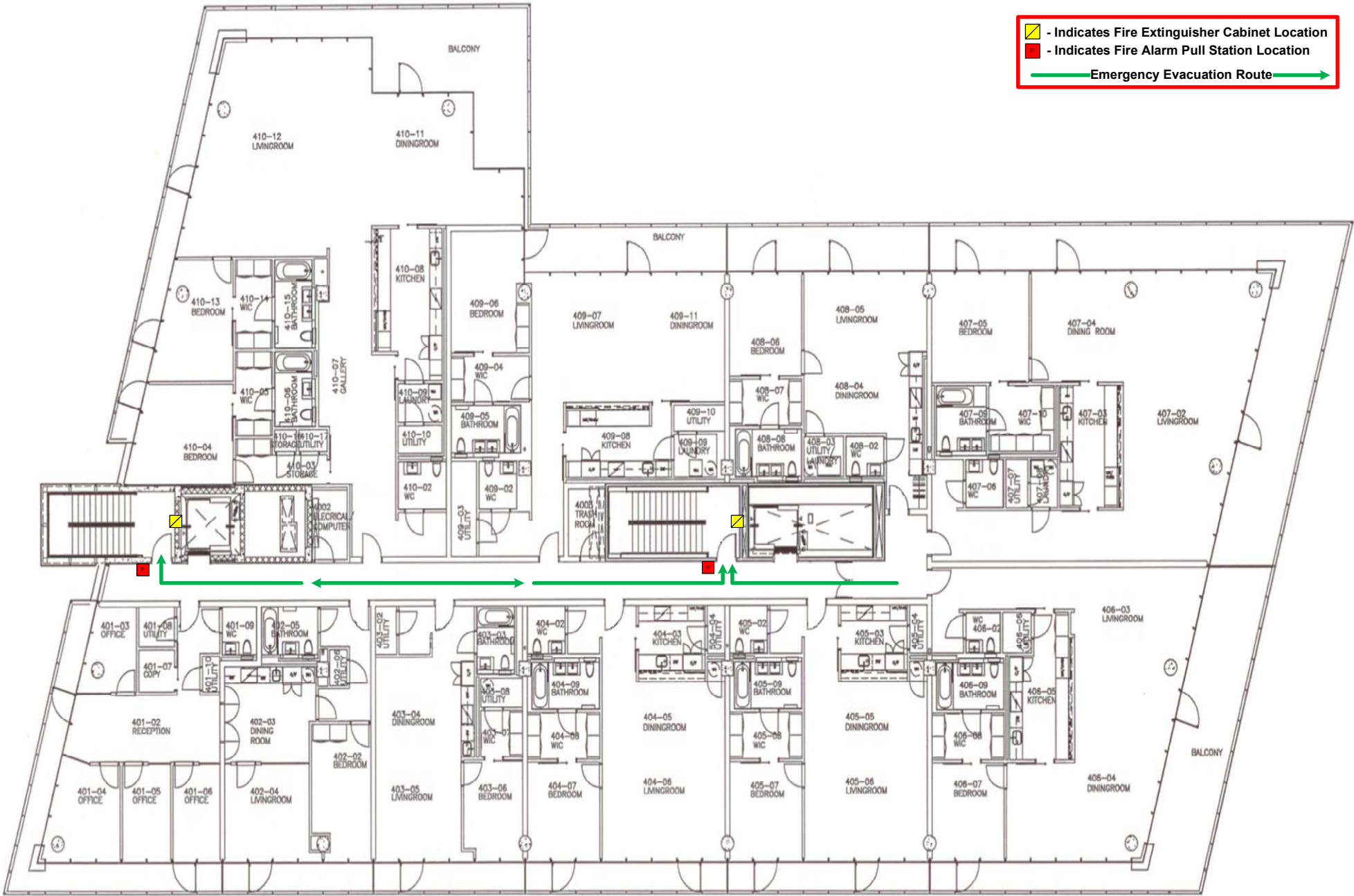
2900 K Street, NW
2nd Floor
Event Emergency Evacuation Plan

- ▣ - Indicates Fire Extinguisher Cabinet Location
- - Indicates Fire Alarm Pull Station Location
- Emergency Evacuation Route

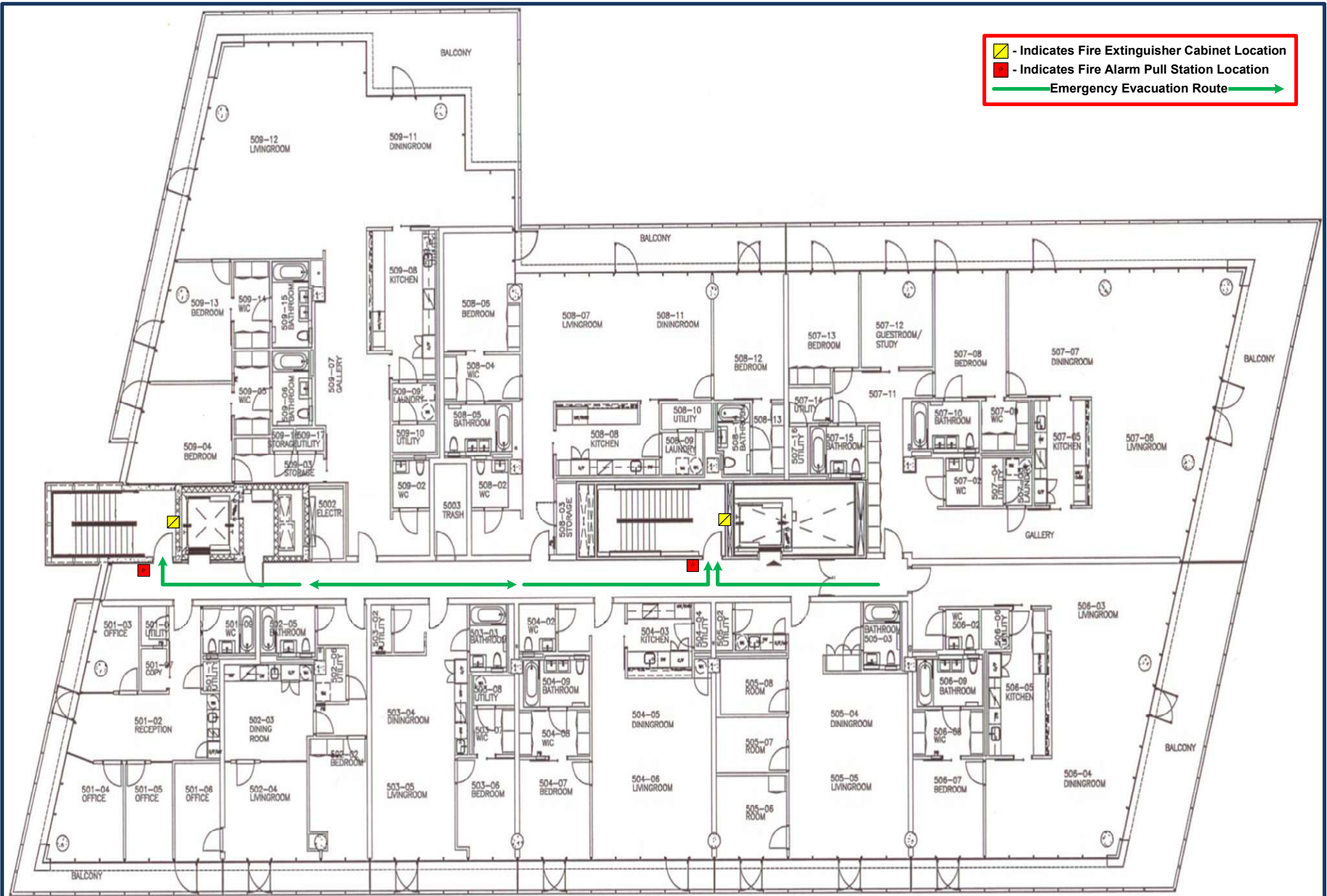


2900 K Street, NW
3rd Floor
Emergency Evacuation Plan

-  - Indicates Fire Extinguisher Cabinet Location
-  - Indicates Fire Alarm Pull Station Location
-  - Emergency Evacuation Route



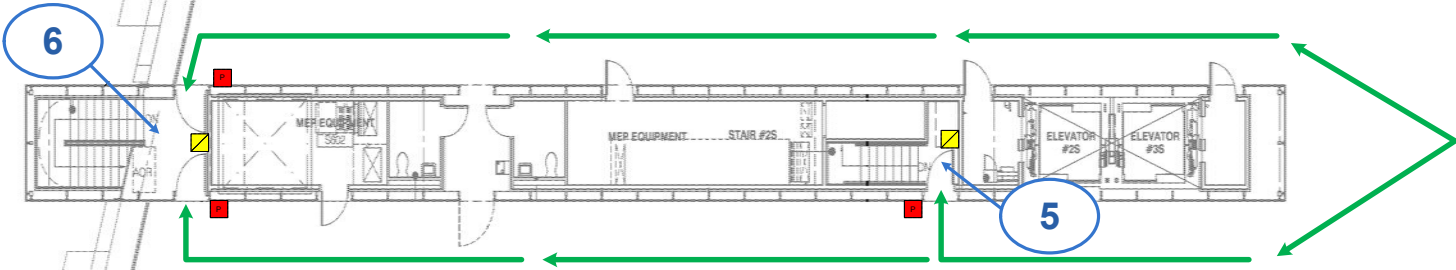
2900 K Street, NW
4th Floor
Emergency Evacuation Plan



- Indicates Fire Extinguisher Cabinet Location
- Indicates Fire Alarm Pull Station Location
- Emergency Evacuation Route

2900 K Street, NW
5th Floor
Emergency Evacuation Plan

- ▣ - Indicates Fire Extinguisher Cabinet Location
- - Indicates Fire Alarm Pull Station Location
- Emergency Evacuation Route



2900 K Street, NW
Roof Level
Emergency Evacuation Plan